

Clarke®



SANDING ROLLER

MODEL NO: CSR310

PART NO: 6500480

OPERATION & MAINTENANCE INSTRUCTIONS

UK
CA | CE



ORIGINAL INSTRUCTIONS

GC0124 -ISS 6

INTRODUCTION

Thank you for purchasing this CLARKE Sanding Roller.

Before attempting to use this product, please read this manual thoroughly and follow the instructions carefully. In doing so you will ensure the safety of yourself and that of others around you, and you can look forward to your purchase giving you long and satisfactory service.

GUARANTEE

This product is guaranteed against faulty manufacture for a period of 12 months from the date of purchase. Please keep your receipt which will be required as proof of purchase.

This guarantee is invalid if the product is found to have been abused or tampered with in any way, or not used for the purpose for which it was intended.

Faulty goods should be returned to their place of purchase, no product can be returned to us without prior permission.

This guarantee does not effect your statutory rights.

SPECIFICATIONS

Model Number	CSR310
Rated Voltage	230V~50Hz
Power Input	310W
Speed Range	1600-3000 rpm
Sound Pressure Level LpA	80.2 dB(A), Uncertainty Factor (K) 3 dB(A)
Sound Power Level LWA	91.2 dB(A), Uncertainty Factor (K) 3 dB(A)
Weight	1.7 kg (unpacked)
Vibration	4.243 m/s ² Uncertainty Factor (K) 1.5
Dimensions (L x W x H)	500 mm x 127 mm x 74 mm

POWER TOOL SAFETY WARNINGS

WORK AREA

1. Keep the work area clean and well lit. Cluttered and dark areas invite accidents.
2. Do not operate power tools in explosive atmospheres, such as in the presence of flammable liquids, gases or dust. Power tools create sparks which may ignite the dust or fumes.
3. Keep children and bystanders away while operating a power tool. Distractions can cause you to lose control.

ELECTRICAL SAFETY

1. **Power tool plugs must match the outlet. Never modify the plug in any way. Do not use adaptor plugs with earthed (grounded) power tools.** Unmodified plugs and matching outlets will reduce the risk of electric shock.
2. **Do not expose power tools to rain or wet conditions.** Water entering a power tool will increase the risk of electric shock.
3. **Do not abuse the cable.** Never use it for carrying, pulling or unplugging the power tool. Keep the cable away from heat, oil, sharp edges or moving parts. Damaged or entangled cables increase the risk of electric shock.
4. **When operating a power tool outdoors, use an extension cable suitable for outdoor use.** Use of a cable suitable for outdoor use reduces the risk of electric shock
5. If operating the power tool in a damp location is unavoidable, use a residual current device (RCD) protected supply.

PERSONAL SAFETY

1. **Stay alert, watch what you are doing and use common sense when operating a power tool.** Do not use a power tool while you are tired or under the influence of drugs, alcohol or medication. A moment of inattention while operating power tools may result in personal injury.
2. **Use safety equipment. Always wear eye protection.** Safety equipment such as dust mask, non-skid safety shoes, hard hat, or hearing protection used for appropriate conditions will reduce personal injuries.
3. **Avoid accidental starting.** Ensure the switch is in the off position before plugging in. Carrying power tools with your finger on the switch or plugging in power tools that have the switch on invites accidents.
4. **Remove any wrench before turning the power tool on.** A wrench left attached to a rotating part may result in personal injury.

5. **Do not overreach.** Keep proper footing and balance at all times. This enables better control of the power tool in unexpected situations.
6. **Dress properly.** Do not wear loose clothing or jewellery. Keep your hair, clothing and gloves away from moving parts. Loose clothes, jewellery or long hair can be caught in moving parts.

POWER TOOL USE AND CARE

1. **Do not force the power tool.** Use the correct accessories for your application. The correct power tool will do the job better and safer at the rate which it was designed for.
2. **Do not use the power tool if the switch does not turn it on and off.** Any power tool that cannot be controlled with the switch is dangerous and must be repaired.
3. **Disconnect the plug from the power source before changing accessories, or storing power tools.** Such preventive safety measures reduce the risk of starting the power tool accidentally.
4. **Store idle tools out of the reach of children and do not allow persons unfamiliar with the power tool or these instructions to operate it.** Power tools are dangerous in the hands of untrained users.
5. **Maintain power tools.** Check for misalignment or binding of moving parts, breakage of parts and any other condition that may affect the power tool's operation. If damaged, have the power tool repaired before use. Many accidents are caused by poorly maintained power tools.
6. **Use the power tool and accessories in accordance with these instructions and in the manner intended, taking into account the working conditions and the work to be performed.** Use of the power tool for operations different from intended could result in a hazardous situation.
7. The performance of this tool may vary, depending upon variations in line voltage. Extension cable usage may also affect performance.

SERVICE

1. **Have your power tool serviced by qualified service personnel using only identical replacement parts.** This will ensure that the safety of the power tool is maintained.

ADDITIONAL SAFETY WARNINGS FOR SANDERS

1. Secure the workpiece to a stable platform. Holding the workpiece by hand or against your body may lead to loss of control.

2. Dust arising from sanding may endanger the health of the operator and possible bystanders. Wear a dust mask and ensure that persons entering the work area are also protected.
3. Remove all dust after sanding.
4. Take care when sanding lead based paint or when sanding wood or metal which may produce toxic dust, - do not let children or pregnant women enter the work area.

EXPLANATION OF SYMBOLS & PICTOGRAMS



Read instruction manual before use.



Wear safety glasses or goggles when using the tool.



Wear ear protection when using this tool.



Wear a dust mask.

ELECTRICAL CONNECTIONS



WARNING: READ THESE ELECTRICAL SAFETY INSTRUCTIONS THOROUGHLY BEFORE CONNECTING THE PRODUCT TO THE MAINS SUPPLY.

Before switching the product on, make sure that the voltage of your electricity supply is the same as that indicated on the rating plate. This product is designed to operate on 230VAC 50Hz. Connecting it to any other power source may cause damage.

This product may be fitted with a non-rewireable plug. If it is necessary to change the fuse in the plug, the fuse cover must be refitted. If the fuse cover becomes lost or damaged, the plug must not be used until a suitable replacement is obtained.

If the plug has to be changed because it is not suitable for your socket, or due to damage, it should be cut off and a replacement fitted, following the wiring instructions shown below. The old plug must be disposed of safely, as insertion into a mains socket could cause an electrical hazard.

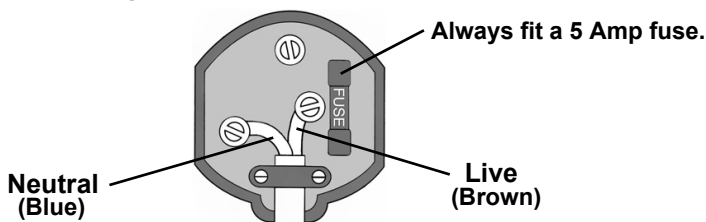


**WARNING: THE WIRES IN THE POWER CABLE OF THIS PRODUCT ARE COLOURED IN ACCORDANCE WITH THE FOLLOWING CODE:
BLUE = NEUTRAL BROWN = LIVE**

If the colours of the wires in the power cable of this product do not correspond with the markings on the terminals of your plug, proceed as follows.

- The wire which is coloured **Blue** must be connected to the terminal which is marked **N** or coloured **Black**.
- The wire which is coloured **Brown** must be connected to the terminal which is marked **L** or coloured **Red**.

Plug must be BS1363/A approved.



Ensure that the outer sheath of the cable is firmly held by the clamp

We strongly recommend that this machine is connected to the mains supply via a Residual Current Device (RCD)



This symbol indicates that this is a Class II product, and does not require an earth connection.

CARTON CONTENTS

The following items should be supplied in the carton. If any parts are missing or damaged please contact the Clarke dealer where you purchased the product.

- 1 x Electric Sanding Roller Machine
- 1 x Sanding Roller 45 x 60mm (8)
- 1 x Sanding sleeve 80G abrasive (11)
- 1 x Lamella roller 60 x 60mm (80G abrasive) (6)
- 1 x Lamella roller 60 x 10mm (80G abrasive) (6)
- 1 x Dust Extract Adaptor (5)
- 1 x Hex Key (12)

PARTS IDENTIFICATION



1	Spindle/tool holder	7	Spindle Lock Button
2	Holding Screw	8	Sanding sleeve carrier
3	Spark Deflector	9	On/off Switch
4	Knurled Adjusting Knob	10	Variable Speed Control Knob
5	Dust Extract Adaptor	11	Abrasive Sleeve
6	Lamella rollers 60x10 and 60x60	12	Hex Key

BEFORE USE



WARNING: BEFORE FITTING ACCESSORIES MAKE SURE THAT THE TOOL IS SWITCHED OFF AND UNPLUGGED.

FITTING THE SPARK DEFLECTOR

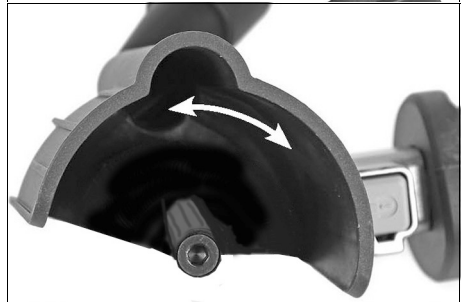
ASSEMBLY

1. Slide the spark deflector along the grooves on the sanding arm.
2. Tighten the knurled screw.



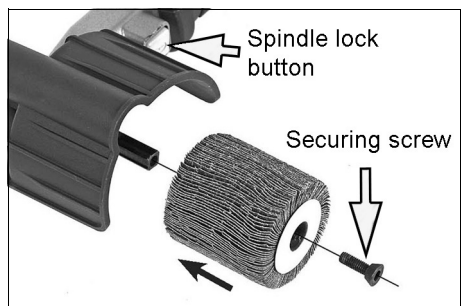
ADJUSTMENT

1. When the spark deflector is mounted it can be adjusted to one of four positions as required by the user.
2. Push the spark deflector into the required position around the sanding arm.



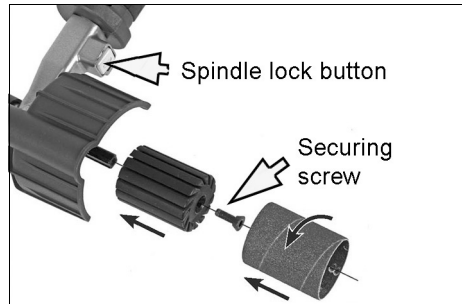
FITTING AND REMOVING ACCESSORIES

1. Press the spindle lock button.
2. Remove the securing screw with the hex key provided.
3. Push the sanding accessory onto the tool holder.
4. Secure by refitting the securing screw.



NOTE: Sanding accessories can only be fitted one way. The sanding accessory must slide on easily. Do not attempt to force it onto the tool holder. Check the correct direction of the sanding accessory.

5. Fit the sanding sleeve carrier as described above.
6. Press the spindle lock button and turn the sander by hand until the spindle lock engages.
7. Turn the sanding sleeve anti-clockwise along with the slots on the sanding sleeve carrier.



DUST EXTRACTION



CAUTION: HARMFUL OR TOXIC DUST MAY BE PRODUCED WHEN SANDING LEAD PAINTED SURFACES, WOODS OR METAL. CONTACT WITH, OR INHALATION OF THESE DUSTS CAN ENDANGER THE HEALTH OF THE OPERATOR OR BYSTANDERS. CERTAIN DUSTS LIKE OAK AND BEECH ARE CONSIDERED TO BE CANCEROUS IN CONJUNCTION WITH ADDITIVES IN WOOD TREATMENTS (CHROMATE, WOOD PRESERVATIVES). ASBESTOS-CONTAINING MATERIALS MAY ONLY BE HANDLED BY EXPERTS.

CAUTION: - USE A DUST EXTRACTION DEVICE OR A VACUUM CLEANER.

CAUTION: - WORK IN A WELL VENTILATED ROOM. - THE USE OF A DUST MASK FILTER CLASS P2 IS RECOMMENDED. - OBSERVE LOCAL REGULATIONS REGARDING THE HANDLING OF CERTAIN MATERIALS.

Use a dust extraction device or a vacuum cleaner to remove dust from the sanding accessory.

FITTING THE DUST EXTRACTION ADAPTER

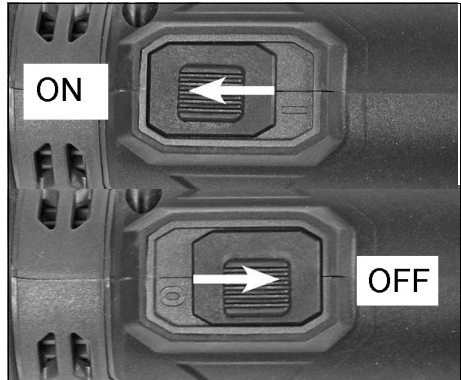
1. Slide the dust extraction adapter into the spark deflector.
2. Connect the suction hose (not included) to the dust extraction adapter. Use the reducer ring supplied with the hose if necessary.
3. Use a suitable dust extraction device when toxic, carcinogenic or fine dust is produced. Any Clarke dust extractor would be suitable.



OPERATION

SWITCHING ON AND OFF

- To switch the sander on, push the switch to position 1.
- To switch the sander off, push the switch to position 0.



VARIABLE SPEED CONTROL

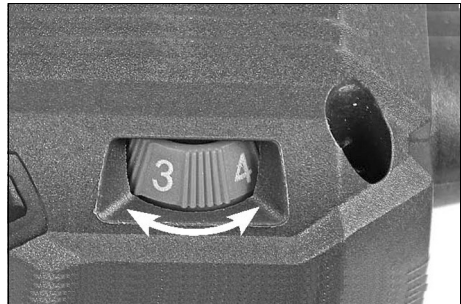
The variable speed control allows you to adapt the speed of the tool to the workpiece material.

The rotation speed can be set between 1600 rpm and 3000 rpm with the speed control switch.

The speed control switch has 6 levels marked on it >1< indicates the lowest speed setting >6< the highest.

NOTE: The speed can also be adjusted during operation as described above.

- Use a low speed setting when using a fine grit, when working with plastics or ceramics and when removing painted or varnished surfaces.
- Use a high speed setting when using a coarse grit and when removing a lot of material.



HINTS FOR OPTIMUM USE

- Always hold the sander securely.
- Do not exert pressure on the sander.
- Regularly check the condition of the abrasive accessory and replace when necessary.
- On very uneven surfaces or when removing layers of paint, start with a coarse grit. On other surfaces, start with a medium grit. In both cases, gradually change to a fine grit for a smooth finish.

ACCESSORIES



- An accessory kit (part no 6500483) is available from your Clarke dealer.

MAINTENANCE



WARNING: BEFORE PERFORMING ANY MAINTENANCE, SWITCH OFF AND UNPLUG THE SANDER.

- Your sander has been designed to operate over a long period of time with a minimum of maintenance. Continuous satisfactory operation depends upon proper care.
- Regularly clean the ventilation slots using a soft dry brush or dry cloth.
- Only clean the motor housing using a clean damp cloth. Do not use any abrasive or solvent-based cleaner.
- A damaged power cable should be replaced by your Clarke dealer or qualified electrician.
- The bearings in this sander are sealed for life and require no maintenance.

VIBRATION

The declared vibration emission values stated in the specifications have been measured in accordance with a standard test method provided by EN 60745 and may be used for comparing one tool with another. The declared vibration emission value may also be used in a preliminary assessment of exposure.



WARNING: THE VIBRATION EMISSION VALUE DURING ACTUAL USE OF THE POWER TOOL CAN DIFFER FROM THE DECLARED VALUE DEPENDING ON THE WAYS IN WHICH THE TOOL IS USED. THE VIBRATION LEVEL MAY INCREASE ABOVE THE LEVEL STATED.

DECLARATION OF CONFORMITY



Fitzwilliam Hall, Fitzwilliam Place, Dublin 2

DECLARATION OF CONFORMITY

This is an important document and should be retained.

We hereby declare that this product(s) complies with the following directive(s):

2014/30/EU Electromagnetic Compatibility Directive
2006/42/EC Machinery Directive
2011/65/EU Restriction of the Use of Certain Hazardous Substances in Electrical & Electronic Equipment (RoHS) Directive

The following standards have been applied to the product(s):

EN 55014-1:2006+A1+A2, EN 55014-2:2015, EN 61000-3-2:2014, EN 61000-3-3:2013,
EN 55014-1:2017, EN 62841-1:2015, EN 62841-2-4:2014, IEC 62321-3-1:2013, IEC 62321-6:2015,
IEC 62321-8:2017, IEC 62321-7-1:2015, IEC 62321-7-2:2017, EN ISO 17075-1:2017.

The technical documentation required to demonstrate that the product(s) meet(s) the requirement(s) of the aforementioned directive(s) has been compiled and is available for inspection by the relevant enforcement authorities.

The CE mark was first applied in: 2017

Product Description: Sanding Roller (230V)
Model number(s): CSR310
Serial / batch Number: N/A
Date of issue: 03/01/2023

Signed:

J.A. Clarke
Director



Hemnell Street, Epping, Essex, CM116 4LG

DECLARATION OF CONFORMITY

This is an important document and should be retained.

We hereby declare that this product(s) complies with the following statutory requirement(s):

Electromagnetic Compatibility Regulations 2016
Supply of Machinery (Safety) Regulations 2008
The Restriction of the Use of Certain Hazardous Substances in Electrical and Electronic Equipment Regulations 2012

The following standards have been applied to the product(s):

EN 55014-1:2006+A1+A2, EN 55014-2:2015, EN 61000-3-2:2014, EN 61000-3-3:2013,
EN 55014-1:2017, EN 62841-1:2015, EN 62841-2-4:2014, IEC 62321-3-1:2013, IEC 62321-6:2015,
IEC 62321-8:2017, IEC 62321-7-1:2015, IEC 62321-7-2:2017, EN ISO 17075-1:2017.

The technical documentation required to demonstrate that the product(s) meet(s) the requirement(s) of the aforementioned legislation has been compiled and is available for inspection by the relevant enforcement authorities.

The UKCA mark was first applied in: 2023

Product Description: Sanding Roller (230V)
Model number(s): CSR310
Serial / batch Number: N/A
Date of issue: 03/01/2023

Signed:

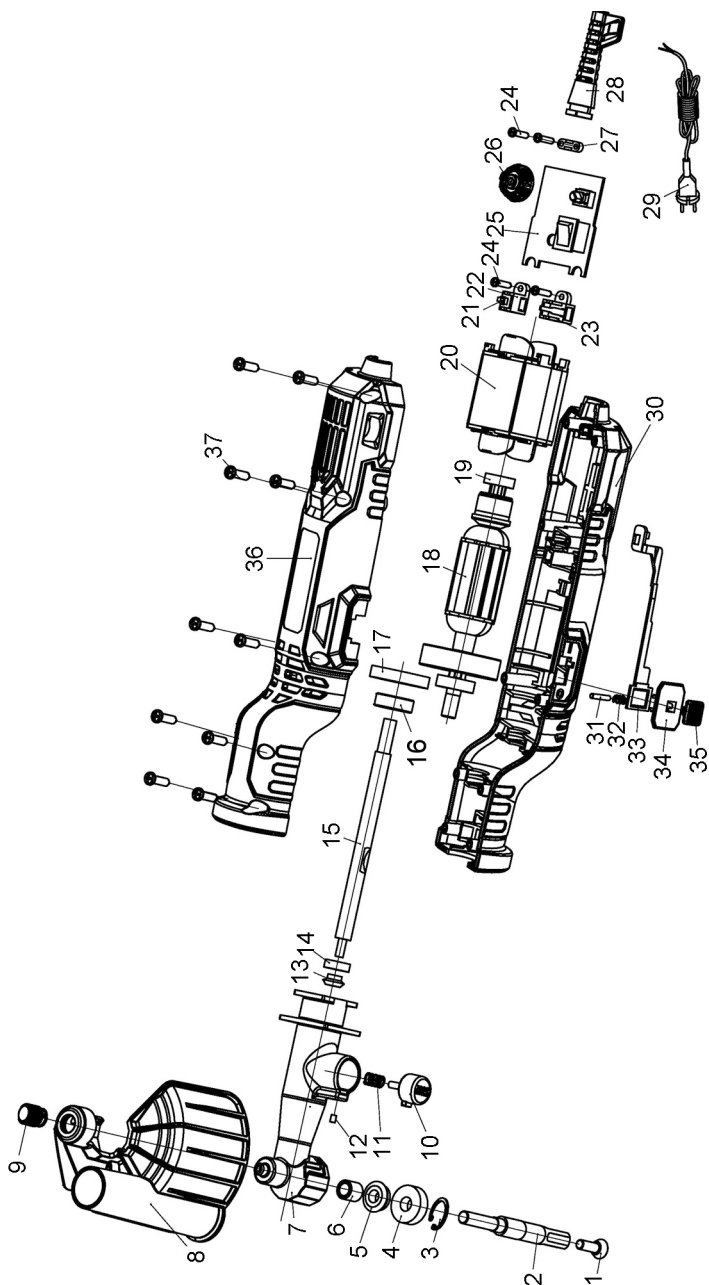
J.A. Clarke
Director

PARTS LIST

1	Lock Screw
2	Output Shaft
3	Circlip for 24 dia hole
4	Bearing 609-2RS
5	Bevel Gear
6	Oil Bearing
7	Holder
8	Protective Hood
9	Knob
10	Shaft Lock Button
11	Shaft Lock Spring
12	Screw M4 x 6
13	Bevel Gear
14	Bearing 625-2RS
15	Transmission Shaft
16	Bearing 628-2RS
17	Gearwheel
18	Armature
19	Bearing 607-2RS
20	Stator
21	Carbon Brush
22	Right Brush Box
23	Left Brush Box
24	Screw ST2.9x16
25	Circuit Board
26	Speed Control Knob
27	Cable Clamp
28	Cable Gland
29	Power Cable
30	Housing
31	Pin 3x15
32	Spring Pushbutton

33	Switch Actuating Rod
34	Switch Button
35	Self Locking Pushbutton
36	Housing
37	Screw ST4.1x19

PART DIAGRAM



A SELECTION FROM THE VAST RANGE OF

Clarke®

QUALITY PRODUCTS



AIR COMPRESSORS

From DIY to industrial, Plus air tools, spray guns and accessories.

GENERATORS

Prime duty or emergency standby for business, home and leisure.

POWER WASHERS

Hot and cold, electric and engine driven - we have what you need

WELDERS

Mig, Arc, Tig and Spot. From DIY to auto/industrial.

METALWORKING

Drills, grinders and saws for DIY and professional use.

WOODWORKING

Saws, sanders, lathes, mortisers and dust extraction.

HYDRAULICS

Cranes, body repair kits, transmission jacks for all types of workshop use.

WATER PUMPS

Submersible, electric and engine driven for DIY, agriculture and industry.

POWER TOOLS

Angle grinders, cordless drill sets, saws and sanders.

STARTERS/CHARGERS

All sizes for car and commercial use.

PARTS & SERVICE:

0208 988 7400

Parts Enquiries

Parts@clarkeinternational.com

Servicing & Technical Enquiries

Service@clarkeinternational.com

SALES: UK 01992 565333 or Export 00 44 (0)1992 565335

Clarke INTERNATIONAL Hemnall Street, Epping, Essex CM16 4LG
www.clarkeinternational.com